

# CERTIFICATE OF LOCATION OF GOVERNMENT CORNER

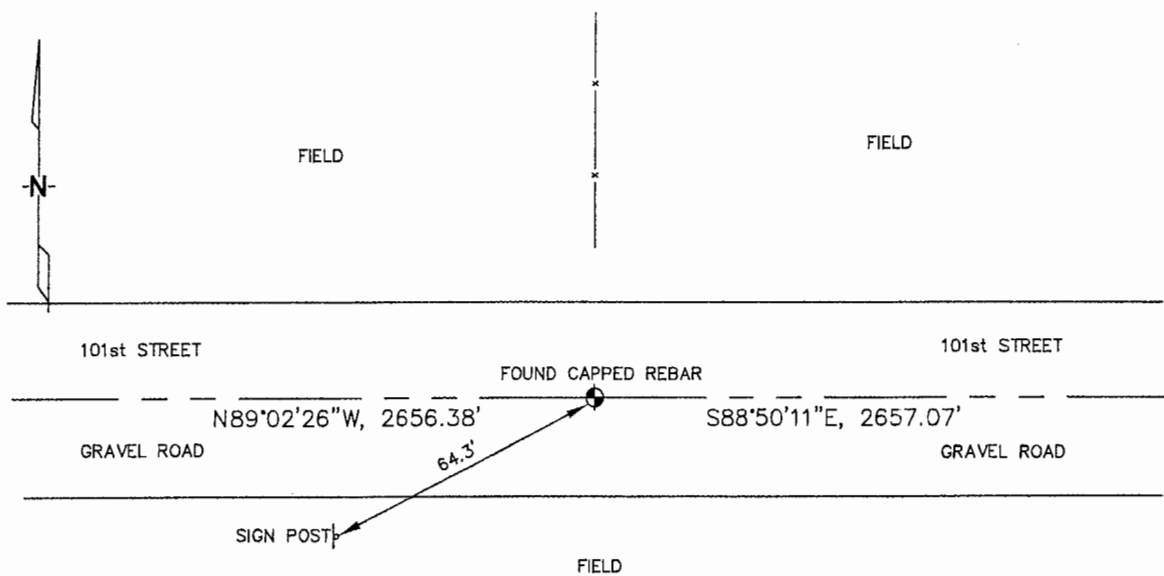
NORTH 1/4 Corner of Section 15, Township 106N, Range 43W, 5TH P.M.

STATE OF MINNESOTA, County of MURRAY

At the corner location shown on the sketch :

- On 3/22/2006 found A REBAR WITH AN UNREADABLE CAP, IN THE  
C/L OF THE GRAVEL ROAD OPPOSITE FENCE LINE RUNNING NORTH.  
 left monument as found,  lowered monument,  removed monument (explain)
- On \_\_\_\_\_ set \_\_\_\_\_

Sketch of reference ties



N: 696,647.00  
 E: 2,099,994.09  
 MN SOUTH ZONE, NAD 83  
 NOT TO SCALE

Statement of evidence relative to this corner location is on back page

I hereby certify that this document and the data contained herein was prepared by me or under my direct supervision.

Thomas V. Zeff 5/22/06  
 Thomas V. Zeff Date  
 Registration No. 44563

- Land Surveyor,  Professional Engineer  
 County Surveyor,  County Engineer

OFFICE OF THE COUNTY RECORDER  
 County of \_\_\_\_\_

**SEP 28 2006**

I hereby certify that this document was filed in the Co. Recorders office at \_\_\_\_\_ M. on the \_\_\_\_\_ day of \_\_\_\_\_ A.D., 20

County Recorder James V. Johnson  
 By \_\_\_\_\_, Deputy

DOCUMENT NO. \_\_\_\_\_

STATEMENT OF EVIDENCE:

NORTH 1/4 CORNER, SECTION 15, T. 106 N., R. 43 W.,  
MURRAY COUNTY, MINNESOTA

- 1866 J.W. Bishop, US. Deputy Surveyor, monumented corner.
- ? Date MN DOT R/W Map for Trunk Highway 30, calls for the 1/4 corner to be at the intersection of the trunk highway (east & west) and the fence running south.
- 3/22/2006 Uiteig Engineers, Inc., Survey Crew, Dennis Lavallie Party Chief, found a rebar with an unreadable cap, in the C/L of 101st Street.  
Ties: SW-64.3' to steel, Sign post;  
E-2657.07' to NE corner of Section 15;  
W-2656.38' to NW corner, Section 15.